



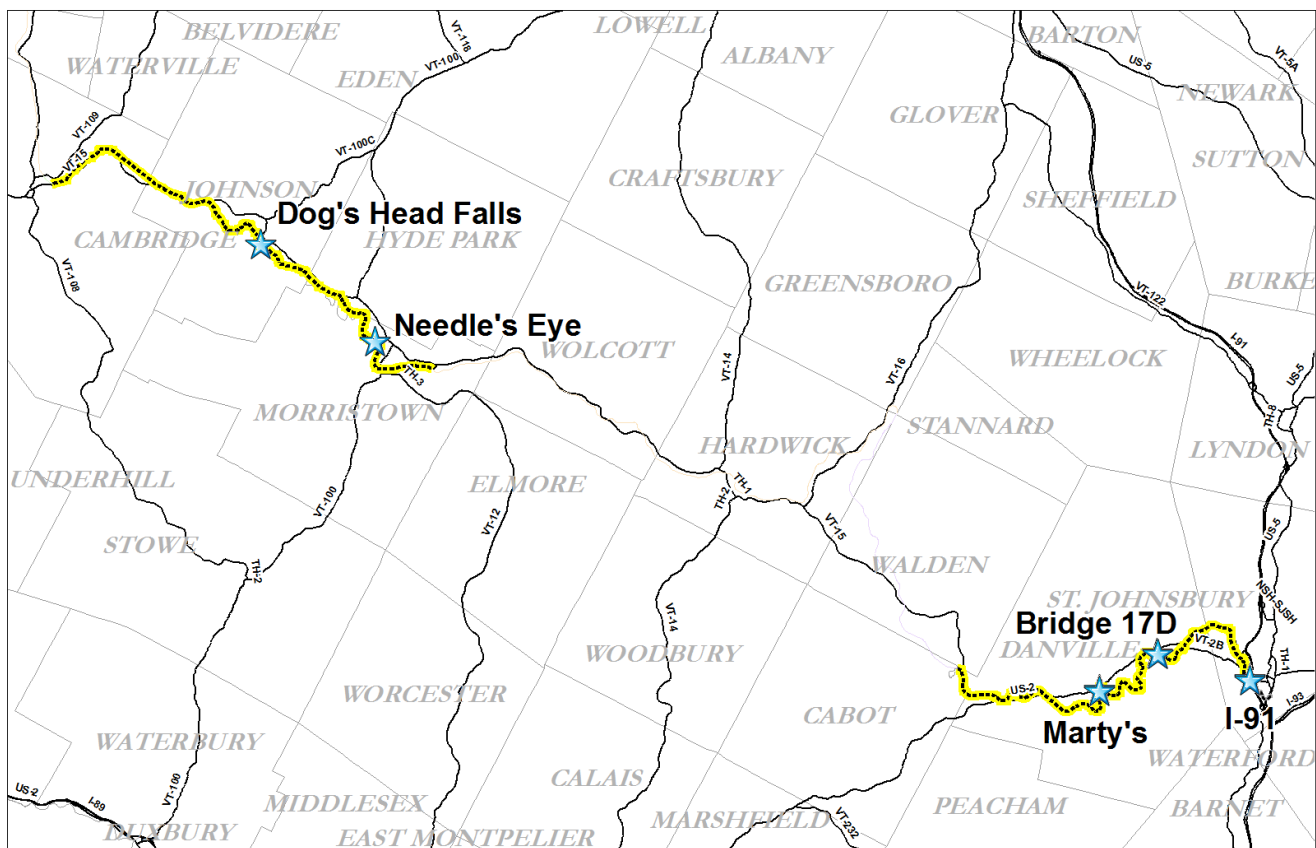
SNOWMOBILE VERMONT

Trail Counters on the LVRT

VAST currently has 11 trail counters on the LVRT. Five of them have provided a several-month or more span of data starting in January of 2016 (after the trail sections were completed in 2015).

The chart below shows monthly totals for each of those sites for the past two years (extrapolated if the month had partial data). The counters record “events” only, they do not differentiate between user types, and can’t tell the direction of travel.

The clearest trend in this data is that non-snowmobile use far exceeds snowmobile use of the trail. A rough estimate from the data is that 10% or less of trail use occurs in the four winter months, and we have to assume that some of those visitors are pedestrians, skiers, and fat-bikers.





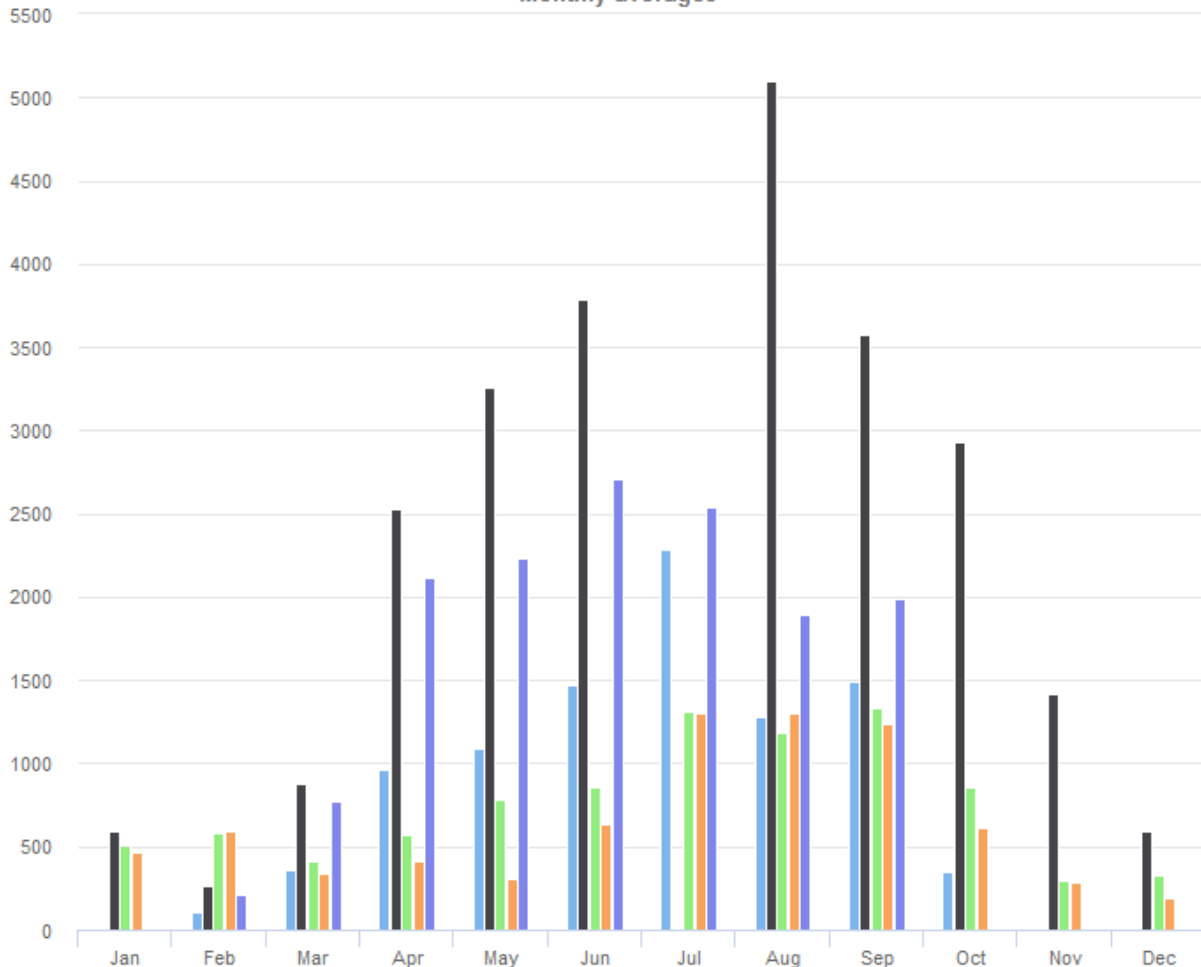
SNOWMOBILE VERMONT

Months of the year

From 2016-02-01 to 2018-02-01



Monthly averages



Excel CSV

| Site Name | Average | Median | STDV (σpop) | Min | Max |
|----------------------------|---------|---------|----------------|-------|---------|
| LVRT 04 - Dog's Head Falls | 1,043.6 | 1,087.0 | 651.6 | 105.8 | 2,287.0 |
| LVRT 06 Needle Eye | 2,265.2 | 2,531.0 | 1,531.2 | 266.0 | 5,099.5 |
| LVRT 09 Marty's Bridge | 752.0 | 683.4 | 349.7 | 297.5 | 1,329.0 |
| LVRT 10 - Bridge 17D | 641.7 | 529.0 | 392.2 | 190.0 | 1,304.4 |
| LVRT 11 191 Tunnel | 1,807.6 | 2,050.5 | 813.4 | 210.6 | 2,712.0 |

Vermont Association of Snow Travelers, Inc.

26 VAST Lane, Barre VT 05641 • www.vtvast.org • T 802.229.0005 • F 802.223.4316